



DIAMOND
Ice Systems Ltd.

FALL INTO HARVEST

Overflowing With the Industry's Best.

Manitowoc
► FROM PENTAIR WATER SOLUTIONS

Kelvinator
COMMERCIAL

KOOLAIRE
► FROM MANITOWOC

PENTAIR
EVERPURE

Imbera

RDI Systems

OJEDA
U.S.A. INC.

EETSAN

COLDMATIC
BUILDING SYSTEMS

Global Refrigeration Inc.

Tecumseh

Crysalli
Artisan Water

Continental
Refrigerator

CDS
Commercial Display Systems

KeepRite
REFRIGERATION

Anthony

LEER



FOOD EQUIPMENT FLYER

PRICING IN EFFECT TILL DECEMBER 31, 2025

DUE TO TARIFF VOLATILITY PRICES SUBJECT TO CHANGE WITHOUT NOTICE



NEO®

GET ON BOARD

With Integrated Water Filtration



The NEO is crafted for quality and built for business.
The commitment to sustainability, energy efficiency, low GWP, and

ENERGY STAR certification
makes it ideal for those who want the best for their business, customers
and the environment



Elevate Your Ice with Integrated Water Filtration

- **Great Taste in Every Cube:** Experience cleaner, clearer ice that enhances the quality of your beverages.
- **Enhanced Performance:** Our integrated water filtration system ensures your ice machine operates at its peak, delivering optimum performance day in, day out.
- **Minimal Maintenance:** Enjoy the benefits of lower maintenance needs, thanks to the filtration system's ability to keep your machine clean and efficient.

Championing Environmental Responsibility

- **Next-Generation Cooling:** Utilize the eco-conscious R290 refrigerant, minimizing environmental impact without compromising performance.
- **Efficiency Redefined:** Experience advancements in both energy and water efficiency, reducing your operational costs and ecological footprint.
- **ENERGY STAR® Excellence:** Choose from our selection of models that have earned the ENERGY STAR® qualification, representing superior energy efficiency and sustainability.



NEO UNDERCOUNTER SPECIALS

MODEL	UP140A	UP190A	UP240A	UP310A
PRODUCTION	132LBS	198LBS	225LBS	304LB
WIDTH	26"	26"	26"	30"
DEPTH	28"	28"	28"	28"
HEIGHT WITH LEGS	38.5"	38.5"	38.5"	38.5"
ICE STORAGE	90LBS	90LBS	90LBS	119LBS

****ASK YOUR LOCAL BRANCH ABOUT REMAINING STOCK OF
NEO UF MODELS, AT GREAT PRICES****





MANITOWOC HOTEL DISPENSER SETS

SPA162 + IDT0420A MANITOWOC INDIGO 420# AIR COOLED, DICE CUBE ICE MACHINE C/W 22" WIDE 120 LB STORAGE DISPENSER

SPA312 + IDT0300A MANITOWOC INDIGO 300# AIR COOLED, DICE CUBE ICE MACHINE C/W 30" WIDE 180 LB STORAGE DISPENSER



CNF0201A-161L MANITOWOC NUGGET DISPENSER LEVER ACTIVATED
315LBS PROD, 10LBS STORAGE 115V

CNF0202A-161L MANITOWOC NUGGET DISPENSER LEVER ACTIVATED
315LBS PROD, 20LBS STORAGE 115V

IDT0500A MANITOWOC 500LB AIR COOLED, DICE CUBE
550 LBS DAILY PROD, 115V

D570 MANITOWOC STORAGE BIN



DIAMOND
Ice Systems Ltd.



UNDERCOUNTER ICE MACHINES

KDF0150A KOOLAIRE 150 LB 26" WIDE ICE MACHINE

KDF0250A KOOLAIRE 250 LB 30" WIDE ICE MACHINE

ICE KUBE MACHINES

KDT0300A KOOLAIRE 300 LB 30" WIDE ICE MACHINE

KDT0400A KOOLAIRE 400 LB 30" WIDE ICE MACHINE

KDT0420A KOOLAIRE 420 LB 22" WIDE ICE MACHINE

KDT0500A KOOLAIRE 500 LB 30" WIDE ICE MACHINE

KDT0700A KOOLAIRE 700 LB 30" WIDE ICE MACHINE

KDT1000A KOOLAIRE 1000 LB 30" WIDE ICE MACHINE

KDT1700A KOOLAIRE 1700 LB 48" WIDE ICE MACHINE

WARRANTY: 3 YEAR PARTS & LABOR, 5 YEAR PARTS ON COMPRESSOR & EVAPORATOR

STORAGE BINS

K400 KOOLAIRE STORAGE BIN 30" WIDE

K420 KOOLAIRE STORAGE BIN 22" WIDE

K570 KOOLAIRE STORAGE BIN 30" WIDE

K970 KOOLAIRE STORAGE BIN 48" WIDE

WARRANTY: 3 YEARS PARTS & LABOR





REFRIGERATED DELI CASES

MAINTENANCE-FREE CONDENSER

ELECTRONIC TEMP CONTROL

LED PERIMETER LIGHTING AROUND GLASS

4 AMP ACCESSORY RECEPTACLE

SLIDING SELF CLOSING GLASS DOOR ON BACK



MODEL

REFRIGERATED DELI CASES

RDCH3

37.3" x 35.2" x 50"H

RDCH4

49.3" x 35.2" x 50"H

RDCH5

60.3" x 35.2" x 50"H

RDCH6

73.8" x 35.2" x 50"H



PASS THRU COOLER

MODEL

PASS THRU COOLER

RMH-33PT

39.6" X 27.2" X 56.5"

GLASS DOOR FREEZERS -10F TO 0F

MODEL

GLASS DOOR FREEZER

FMH-12

24.8" X 25.7" X 62.6"

FMH-49

52" X 33.2" X 80.8"



DIAMOND
Ice Systems Ltd.



ALPA OPEN AIR MERCHANDISERS

<u>MODEL</u>	<u>OPEN AIR MERCHANDISER</u>
ALPA-55	34.8" x 31.7" x 59.3"
ALPA-77	34.8" x 31.7" x 78.8"
ALPA-99	51.5" x 31.7" x 59.3"
ALPA-120	51.5" x 31.7" x 78.8"
ALPA-120HSLIM	47.5" x 22.9" x 80.2"



ICE CREAM FREEZERS

NBH28	4.31 CU FT FREEZER
NBH34	5.56 CU FT FREEZER
NBH43	7.63 CU FT FREEZER
NBH51	9.43 CU FT FREEZER
NBH60	11.66 CU FT FREEZER
NBH68	14.24 CU FT FREEZER

ICE CREAM DIPPING FREEZER

<u>MODEL</u>	<u>ICE CREAM DIPPING CABINET</u>
8-FLAVOR	50.4" x 26.4" x 52" 15.2 CF
12-FLAVOR	68.2" x 26.4" x 52" 20.9 CF



<u>MODEL</u>	<u>COUNTERTOP REACH-INS</u>
CTFH3	FREEZER
CTRH4	COOLER



VR27 HC INTUITIVO COOLER

ESTABLISHING A **NEW STANDARD** IN THE FOODSERVICE INDUSTRY.

Full glass door unit features energy-efficient HC refrigerant with minimal charge, spark-free components, and the most competitive utility costs in its category, all while providing enhanced product visibility.



KEY FEATURES

•Intuitivo Cooler

Combining Machine Learning with Computer Vision, Intuitivo is building a unique infrastructure that allows installation of thousands of A-POPs at an unprecedented speed and cost.

•High-Speed Secure Pop-Out Cameras

Three external cameras (two on top, one on the side) capturing at 60 frames per second for reliable capture of product purchases.

•Eco-Friendly Refrigerant

Environmentally friendly hydrocarbon refrigerant has low Global Warming Potential (GWP). Meets all USA and California refrigerant and energy standards.

•High Power Reliable Refrigeration System

Refrigeration System Fast pull down, optimal internal air circulation and reliable refrigeration, maintaining colder temperatures for food preservation.

•Standard LED Lighting System

Ultra bright low energy interior LED illumination system provides optimal merchandise display visibility. Low profile, door mounted, clip-in LED design.

•Roller Base for Easy Installation

The cabinet is equipped with a roller base, allowing for effortless movement and precise placement during installation, plus 4 leveling legs required for cabinet stability.

•NAMA Insight Health Lock

Health timer system can be turned ON for perishable foods, or OFF if not required for the V9 Southco smart lock. Intuitivo AI connectivity required for online unlocking, and temperature history for perishable food safety management. A manual unlock button is located 12" behind bottom grill, for power outages and health inspector testing.



DIAMOND
Ice Systems Ltd.

AVAILABLE IN VENDING & NON VENDING OPTIONS

AVAILABLE AS A REFRIGERATED OR AMBIENT UNIT



COUNTERTOP GLASS DOOR COOLERS

- VR-1.5-HC SINGLE DOOR 3 SHELVES
- VR-04-HC SINGLE DOOR 3 SHELVES
- VR-06-HC SINGLE DOOR 3 SHELVES



SINGLE GLASS DOOR COOLERS

- VR-08-HC SINGLE DOOR 5 SHELVES
- VR-10-HC SINGLE DOOR 3 SHELVES
- VR-12-HC SINGLE DOOR 4 SHELVES
- G3-19-HC SINGLE DOOR 5 SHELVES
- G3-19-HC-SS S/S SINGLE DOOR 5 SHELVES



MULTIPLE GLASS DOOR COOLERS

- VRD-21-HC DOUBLE DOOR 4 SHELVES
- VRD-26-HC DOUBLE DOOR 10 SHELVES
- VRD-37-HC DOUBLE DOOR 10 SHELVES
- VRD-43-HC DOUBLE DOOR 10 SHELVES
- G3-72-HC TRIPLE DOOR 15 SHELVES



DOUBLE GLASS DOOR SLIDERS

- VRD-37SD DOUBLE DOOR 10 SHELVES
- VRD-43SD-HC DOUBLE DOOR 10 SHELVES

SINGLE GLASS DOOR FREEZERS

- VFS24 SINGLE DOOR 5 SHELVES



FREIGHT: FOB OUR WAREHOUSE
WARRANTY: 3 YEARS PARTS AND LABOR
5 YEARS ON COMPRESSOR



CHEF BASE COOLER

KCHCB48R	50" CHEF BASE COOLER
KCHCB60R	62" CHEF BASE COOLER
KCHCB72R	74" CHEF BASE COOLER



CHEST FREEZERS

KCCF073WS	7 CU FT FREEZER
KCCF140WH	14 CU FT FREEZER
KCCF170WH	17 CU FT FREEZER
KCCF210WH	21 CU FT FREEZER



****CHEST FREEZERS LIMITED STOCK ****

GLASS FROSTERS

KCHGF24	24" GLASS FROSTER
KCHGF36	36" GLASS FROSTER





GLASS DOOR BACK BARS

KCHBB48G	49" BACK BAR COOLER
KCHBB60G	61" BACK BAR COOLER
KCHBB72G	73" BACK BAR COOLER



SOLID DOOR BACK BARS

KCHBB48S	49" BACK BAR COOLER
KCHBB60S	61" BACK BAR COOLER
KCHBB72S	73" BACK BAR COOLER

STAINLESS STEEL SOLID DOOR BACK BARS

KCHBB48SS	49" BACK BAR COOLER
KCHBB60SS	61" BACK BAR COOLER
KCHBB72SS	73" BACK BAR COOLER



KEG DRAFT COOLERS

KCHBBD1D1T	SINGLE DOOR ONE TOWER
KCHBBD2D1T	DOUBLE DOOR ONE TOWER
KCHBBD2D2T	DOUBLE DOOR TWO TOWER
KCHBBD3D2T	TRIPLE DOOR TWO TOWER

BOTTLE COOLERS

KCHBC36	36" BOTTLE COOLER
KCHBC50	50" BOTTLE COOLER
KCHBC65	65" BOTTLE COOLER
KCHBC95	95" BOTTLE COOLER



DIAMOND
Ice Systems Ltd.



UNDERCOUNTER COOLERS

- KCHUC27R 28" SINGLE DOOR COOLER
- KCHUC48R-32 48" DOUBLE DOOR COOLER
- KCHUC60R 61" DOUBLE DOOR COOLER
- KCHUC72R 72" TRIPLE DOOR COOLER

UNDER COUNTER FREEZERS

- KCHUC27F 28" SINGLE DOOR FREEZER
- KCHUC48F-32 48" DOUBLE DOOR FREEZER



WORK TOP COOLERS

- KCHUCWT27R 28" SINGLE DOOR COOLER
- KCHUCWT48R 48" DOUBLE DOOR COOLER
- KCHUCWT60R 61" DOUBLE DOOR COOLER
- KCHUCWT72R 72" TRIPLE DOOR COOLER



WORK TOP FREEZERS

- KCHUCWT27F 28" SINGLE DOOR FREEZER
- KCHUCWT48F 48" DOUBLE DOOR FREEZER

DRAWER KITS

- 880614 FOR 27" UNDERCOUNTER
- 880615 FOR 29" MEGA TOP
- 880616 FOR 48" MEGA TOP & UNDERCOUNTER
- 880617 FOR 60" MEGA TOP & UNDERCOUNTER

ADA UNDER COUNTER COOLERS

- KCHUC23R 23" SINGLE DOOR COOLER
- KCHUCGD23R 23" SINGLE GLASS DOOR

ADA UNDER COUNTER FREEZERS

- KCHUC23F 23" SINGLE DOOR FREEZER
- KCHUCGD23F 23" SINGLE GLASS DOOR





GLASS DOOR REACH-INS

KCHGM12R SINGLE GLASS DOOR COOLER
KCHGM26R SINGLE GLASS DOOR COOLER
KCHGM48R DOUBLE SWING DOOR COOLER
KCHGM72R TRIPLE GLASS DOOR COOLER

KCHSGM36R SLIDING GLASS DOOR COOLER
KCHSGM48R SLIDING GLASS DOOR COOLER
KCHSGM72R SLIDING GLASS DOOR COOLER

KCHGM26F SINGLE GLASS DOOR FREEZER
KCHGM48F DOUBLE GLASS DOOR FREEZER
KCHGM72F TRIPLE GLASS DOOR FREEZER



STAINLESS SOLID DOOR REACH-INS

KCHRI27R1DRE SINGLE DOOR COOLER
KCHRI54R2DRE DOUBLE DOOR COOLER
KCHRI81R3DR TRIPLE DOOR COOLER

KCHRI27R1DFE SINGLE DOOR FREEZER
KCHRI54R2DFE DOUBLE DOOR FREEZER
KCHRI81R3DF TRIPLE DOOR FREEZER

STAINLESS SINGLE DOOR REACH-INS

KCHRI25R1DRE SINGLE DOOR COOLER
KCHRI25R1DFE SINGLE DOOR FREEZER



FREIGHT: FOB OUR WAREHOUSE
WARRANTY: 3 YEARS PARTS AND LABOR
5 YEARS ON COMPRESSOR



SANDWICH TABLES

KCHST27.8	29" 8 INSERT TABLE
KCHST48.12	48" 12 INSERT TABLE
KCHST60.16	61" 16 INSERT TABLE
KCHST70.18	72" 18 INSERT TABLE



MEGA TOP PREP TABLES

KCHMT29.12	29" 12 INSERT TABLE
KCHMT48.18	48" 18 INSERT TABLE
KCHMT60.24	61" 24 INSERT TABLE
KCHMT70.30	72" 30 INSERT TABLE



PIZZA PREP TABLES

KCHPT50.6	48" 6 INSERT TABLE
KCHPT72.9	71" 9 INSERT TABLE
KCHPT92.12	94" 12 INSERT TABLE

BAG ICE MERCHANDISERS

KCHGIM23F	23 CU FT BAG ICE MERCHANDISER
KCHGIM48F	48 CU FT BAG ICE MERCHANDISER



DIPPING CABINETS

KCICDC4	4 TUB ICE CREAM DIPPING CABINET
KCICDC6	6 TUB ICE CREAM DIPPING CABINET
KCICDC8	8 TUB ICE CREAM DIPPING CABINET
KCICDC10	10 TUB ICE CREAM DIPPING CABINET





DISHWASHER 502736 208/1 VLA1G8
502737 240/1 VLA1G4

UNDERCOUNTER DISHWASHER, 30 RACKS/HOUR, 183.2F RINSE
 ELECTRONIC CONTROLS, INTERIOR SELF CLEANING,
 DOUBLE SKINNED INSULATED WALL ENSURES LOW NOISE
 BUILT IN ATMOSPHERIC BOILER

DISHWASHER 504291 208/3 VDH63
504294 208/1 VDH63-1

DISHWASHER, HOOD TYPE, 63 RACKS/HOUR, HOT WATER
 SANITIZING WITH BUILT-IN BOOSTER HEATER, WASH TANK, BOOSTER TANK
 FIELD CONVERT CORNER/STRAIGHT THRU, DETERGENT & RINSE AID PUMPS,
 208V/60/3PH, 9.9 kw 1.1 HP



ICE CREAM CHEST CABINETS

DIGITAL CONTROLLER

MODEL

VISIDIPPER DIPPING CABINET

3 GAL.

2SF	(2)LID,(2) HOLE,(1) ROW,3 FACING,1 STORAGE
4DF	(2)LID,(4)HOLE,(2)ROW,6 FACING, 3 STORAGE
6DF	(4)LID,(6)HOLE,(2)ROW,9 FACING, 7 STORAGE
8DF	(4)LID,(8)HOLE,(2)ROW,12 FACING, 9 STORAGE



MERCHANDISING FREEZER OF TO -20F

DIGITAL CONTROLLER

GLASS DOORS

MODEL

HARDENING CABINETS

T30LGP

SINGLE DOOR TOP MOUNT

T50LGP

DOUBLE DOOR TOP MOUNT

T80LGP

TRIPLE DOOR TEMP TOP MOUNT



DIAMOND
Ice Systems Ltd.



TOP MOUNT PACKAGED REFRIGERATION SYSTEMS



COOLERS

MODEL #	BTU'S @ 25F
DCA050T2	5,500
DCA050T3	5,500
DCA075T2	6,690
DC078T3	6,690
DCA100T2	8,100
DCA100T3	8,100

FREEZERS

MODEL #	BTU'S @ -10F
DFE100T3	5,040
DFE150T3	7,110
DFE200T3	7,920



DIAMOND
Ice Systems Ltd.



WATER FILTER SYSTEMS

- EV9202-81 QC71 SINGLE 4FC-S
- EV9202-91 QC71 SINGLE 7FC-S
- EV9328-91 QC71 PF SINGLE 7FC-S
- EV9324-01 INSURICE SINGLE I2000
- EV9202-42 QC71 TWIN 4FC



REPLACEMENT CARTRIDGES

- EV9618-21 7CB5-S FILTER
- EV9693-31 4FC5-S FILTER
- EV9693-71 7FC5-S FILTER
- EV9612-22 I2000 FILTER
- EV9612-32 I4000 FILTER
- EV9692-31 4FC-S FILTER
- EV9692-71 7FC-S FILTER
- EV9612-56 MC2 FILTER
- EV9613-10 XC2 FILTER
- EV9612-51 BH2 FILTER
- EV9613-21 MH2 FILTER



PRE-FILTER CARTRIDGES

- EV9534-40 EC110 FILTER
- EV9534-20 EC210 FILTER



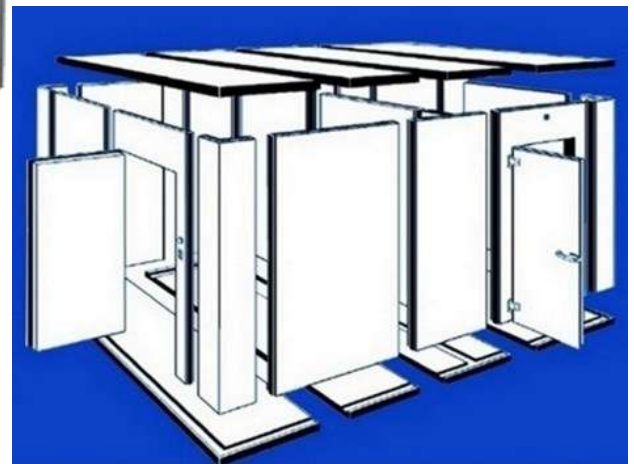
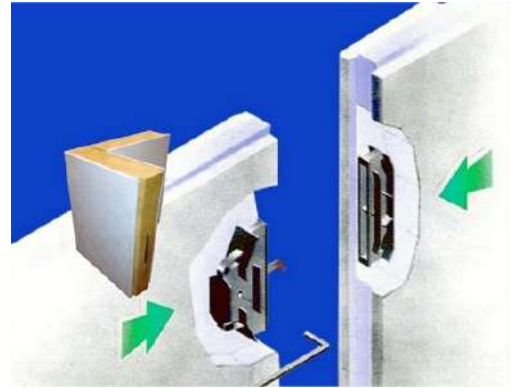
INLINE FILTERS

- EV9100-69 IN-10 CS INLINE FILTER
- EV9100-76 IN-15 CF INLINE FILTER





COLDMATIC
INSULATED PANEL & DOOR SYSTEMS



SWING DOOR

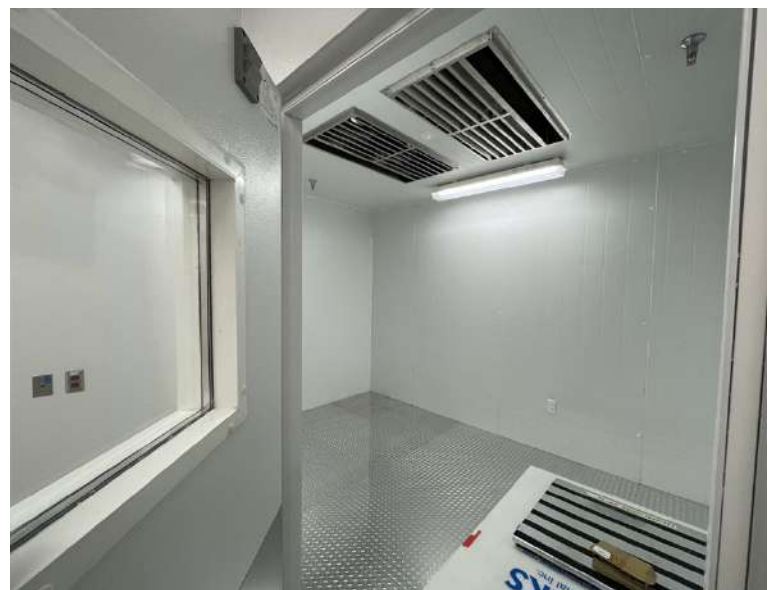
COLDMATIC REFRIGERATION

POLYURETHANE INSULATED DOORS FOR ALL APPLICATIONS

QUALITY CONSTRUCTION

ECONOMICAL AND DURABLE

50 Years



DIAMOND
Ice Systems Ltd.



QUANTUM™ STORAGE SYSTEMS

PRO-FORM ANTIMICROBIAL/EPOXY COATED SHELVING



PART#	WIDTH/LENGTH
QS1824P	18 x 24
QS1830P	18 x 30
QS1836P	18 x 36
QS1842P	18 x 42
QS1848P	18 x 48
QS1854P	18 x 54
QS1860P	18 x 60
QS1872P	18 x 72
QS2424P	24 x 24
QS2430P	24 x 30
QS2436P	24 x 36
QS2442P	24 x 42
QS2448P	24 x 48
QS2454P	24 x 54
QS2460P	24 x 60
QS2472P	24 x 72

PART#	HEIGHT
QP63P	63"
QP74P	74"
QP86P	86"

PART#	CASTER
WR-00H-B	C/W BRAKE
WR-00H-S	SWIVEL



DIAMOND
Ice Systems Ltd.



ASK YOUR LOCAL BRANCH FOR MORE INFO!



DUE TO CURRENT VOLATILE STATE OF TRADE AND UNCERTAINTY OF TARIFFS,
PRICES ARE SUBJECT TO CHANGE WITHOUT NOTICE.



PLEASE CONTACT YOUR LOCAL BRANCH FOR CURRENT COST AND AVAILABILITY.

LOCATION	ADDRESS	TOLL FREE	PHONE	FAX
BURNABY	#301- 6741 Cariboo Road	877-551-5599	604-298-4141	604-298-4150
CALGARY	Bay 12, 3419- 12 Street NE	877-606-8666	403-214-2177	403-214-2199
EDMONTON	#101- 17882 106 Ave.	866-732-2290	780-732-2290	780-732-2299
SASKATOON	3150-D Faithfull Ave.	855-285-4211	306-249-4211	306-249-4214
WINNIPEG	1561 King Edward Street	866-879-3490	204-775-1510	204-775-1527